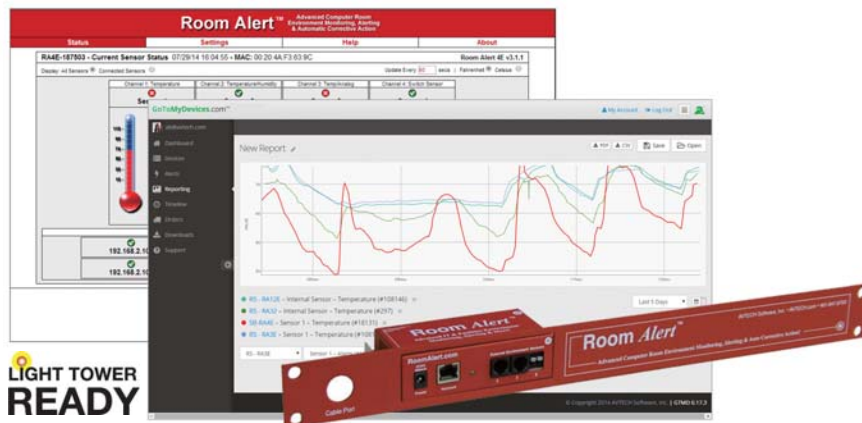


# Room Alert<sup>®</sup> 4E

*“Advanced Physical Environment Monitoring,  
Alerting & Automatic Corrective Action.”*



Order Now For...

**CALL**

Room Alert 4E (Standard) RA4E-ES1-WAS  
Room Alert 4ER (Rack) RA4ER-ES1-RAS



## Broad Features, Extreme Reliability & Light Tower Ready

- Easy Ethernet 'Plug & Play' setup for immediate IT & facilities environment monitoring.
- Includes a built-in Digital Temperature sensor, Device ManageR software & "PUSH" technology.
- Includes an external Digital Temperature Sensor.
- Includes ports for 2 digital sensors, 1 switch sensor or dry contact and a port for a Light Tower or Relay Switch Sensor.
- Offers advanced alerting by email, email-to-SMS, SNMP, webpage update and more.
- Use Room Alert 4E's built-in web server, Device ManageR software (included), GoToMyDevices (included) cloud service, or SNMP to monitor across your network.
- The Room Alert 4E package allows real-time sensor status, data logging, graphing, advanced alerting, Fahrenheit/Celsius, high/low watermarks and more.
- Use Room Alert 4E with or without a host system. That's right... No PC Required! This saves money, improves reliability and provides options. Install in minutes today, enjoy 'Peace Of Mind' tonight!

**5 Steps To Prevent EM Disaster**  
1) Install Monitors for Immediate Detection  
2) Auto Alerting to Responsible IT Staff  
3) Auto Shutdown & Action Procedures  
4) Fast & Appropriate Response by Staff  
5) Review/Analyze/Plan Future Prevention

Manufacturer: AVTECH Software, Inc.

AVT-150210.07

INCLUDES: Room Alert 4E, built-in Digital Temperature Sensor, external Digital Temperature Sensor, 2 Digital Sensor Ports (RJ-11), 1 Switch Sensor Channel, PUSH technology, Ethernet Connection (RJ-45), Light Tower Expansion Port, 10' Ethernet cable, 5V Power Adapter (110/240V, RoHS), built-in web server, SNMP Trap & Query enabled, SNMP MIB, bundled Device ManageR software license, printed *Room Alert 4E User's Guide & Reference Manual*, 1 year Personal subscription to GoToMyDevices, '30-Day Satisfaction Guarantee'. Optional rack mount bracket, sensors, Light Tower or Relay Switch Sensor, voice or GSM modem & software plugin packages available.